

MITSUBISHI ELECTRIC CORPORATION
PUBLIC RELATIONS DIVISION
 7-3, Marunouchi 2-chome, Chiyoda-ku, Tokyo, 100-8310 Japan

FOR IMMEDIATE RELEASE

No. 3261

Customer Inquiries

Overseas Marketing Department
 Factory Automation Systems Group
 Mitsubishi Electric Corporation
www.Mitsubishielectric.com/fa/support/
www.Mitsubishielectric.com/fa/

Media Inquiries

Public Relations Division
 Mitsubishi Electric Corporation
prd.gnews@nk.MitsubishiElectric.co.jp
www.MitsubishiElectric.com/news/

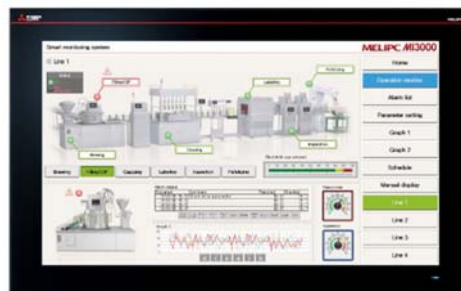
**Mitsubishi Electric Launches MI3000 Model Industrial Computers,
 Extending its MELIPC Series**

Visualization of production information and contributing to production-site IoT

TOKYO, February 18, 2019 – [Mitsubishi Electric Corporation](http://www.mitsubishielectric.com) (TOKYO: 6503) announced today that it will extend its MELIPC series of industrial PCs for edge computing and control applications in the field of factory automation (FA) by introducing two new MI3000 units on February 28. The new units will facilitate the visualization of various data at production sites for improved productivity.



MI3315G-W



MI3321G-W

New MI3000 models in MELIPC series

Product Features

1) Supports Edgexross for visualization of data from the production site

- Like the series' three existing models, the new units are preinstalled with the Edgexross¹ software platform and SLMP² data collector for real-time data collection of production site data and creation of Edge-computing systems.
- The preinstalled GT SoftGOT2000³ visualization software is compatible with Edgexross for easy data visualization.

¹ Open software platform from Japan supporting edge computing and FA/IT integration

² Seamless Message Protocol: Common protocol for seamless connection between CC-Link IE compatible devices and Ethernet[®] products without network hierarchy / boundary

³ Software for creating screen displays and screen-based operations similar to that of the programmable HMI GOT 2000 series

2) **High flexibility and scalability enable optimal system design for a wide variety of applications**

- The 21.5-inch widescreen, Full HD LCD panel⁴ displays data easily and clearly.
- PCAP⁵ touch-panel technology adopted from smartphones and tablets enables a “light-touch” operation and enhanced LCD backlighting
- Flexible connection with various devices, from Windows[®] barcode readers to OnVIF⁶ cameras
- A variety of expansion slots and interfaces, including audio output, support flexible system design for optimum solutions to meet diverse application needs

⁴ Available in MI3321G-W model

⁵ Projected capacitive touch panel technology adopted from smartphones and tablets

⁶ Standard for network cameras

Purpose of Release

With the spread of the IoT (Internet of Things), increasing attention is being focused on efforts to improve productivity and quality by using edge computing, which enables information linkage between controllers and devices at production sites and higher-level IT systems. Mitsubishi Electric initially released on May 8, 2018 three types of MELIPC series industrial PCs for control and edge computing applications: the MI5000, the MI2000 and the MI1000. To further expand the application footprint, the MI3000 industrial panel computers with integrated touch screens will soon be released. The models, which enable the display of collected data at production sites and the operation of facilities and equipment, are preinstalled with Edgexross Basic Software and SLMP data collector to support the visualization of collected data for improved productivity at production sites.

Product		Model	Release	Expected sales per year
MELIPC series industrial PCs	MI3000	MI3321G-W	February 28	1,000 units
		MI3315G-W		

Performance Specification

Item	MI3315G-W	MI3321G-W
OS	Windows [®] 10 IoT Enterprise 2016 LTSB (64bit)	
MPU	Intel [®] Core™ i3-6100U 2.30GHz (Dual Core)	
Screen size	15"	21.5" (widescreen)
Resolution	XGA: 1024 ×768 dots	Full HD: 1920 ×1080 dots
Display colors	16.77 million	
Touch panel	PCAP (projected capacitive)	
Main memory	8GB	
Internal storage capacity	64GB	
Built-in interfaces	Ethernet [®] 3ch, RS232 1ch, RS-232/422/485 1ch, USB Host (USB3.0 2ch, USB2.0 2ch), audio output, DisplayPort [®]	

Expansion slots	PCI Express®/mini PCI Express®	
Operational ambient temperature	0°C to 55°C	
Protective structure	IP66 (front face)	
Power supply voltage	24V DC	
Power consumption	90W or less	
Weight	7.0kg	9.8kg
Preinstalled software	Edgecross basic software, SLMP data collector and GT SoftGOT2000	

Contribution to Environment

By improving productivity, energy consumption can be optimized at the production site.

MELIPC, CC-Link IE and SLMP are registered trademarks of Mitsubishi Electric Corporation.

GOT is a trademark or registered trademark of Mitsubishi Electric Corporation in Japan and other countries.

Edgecross Consortium is currently applying to register the Edgecross trademark.

Windows is a registered trademark of Microsoft Corporation in the USA and other countries.

Intel and Intel Core are trademarks or registered trademarks of Intel Corporation in the United States and other countries.

Ethernet is a registered trademark of Xerox Corporation.

DisplayPort is a trademark or registered trademark of Video Electronics Standards Association in the United States and other countries.

PCI Express is a registered trademark of PCI-SIG.

Other company and product names mentioned in this text are trademarks or registered trademarks of each respective company.

###

About Mitsubishi Electric Corporation

With nearly 100 years of experience in providing reliable, high-quality products, Mitsubishi Electric Corporation (TOKYO: 6503) is a recognized world leader in the manufacture, marketing and sales of electrical and electronic equipment used in information processing and communications, space development and satellite communications, consumer electronics, industrial technology, energy, transportation and building equipment. Embracing the spirit of its corporate statement, Changes for the Better, and its environmental statement, Eco Changes, Mitsubishi Electric endeavors to be a global, leading green company, enriching society with technology. The company recorded consolidated group sales of 4,444.4 billion yen (in accordance with IFRS; US\$ 41.9 billion*) in the fiscal year ended March 31, 2018. For more information visit:

www.MitsubishiElectric.com

*At an exchange rate of 106 yen to the US dollar, the rate given by the Tokyo Foreign Exchange Market on March 31, 2018